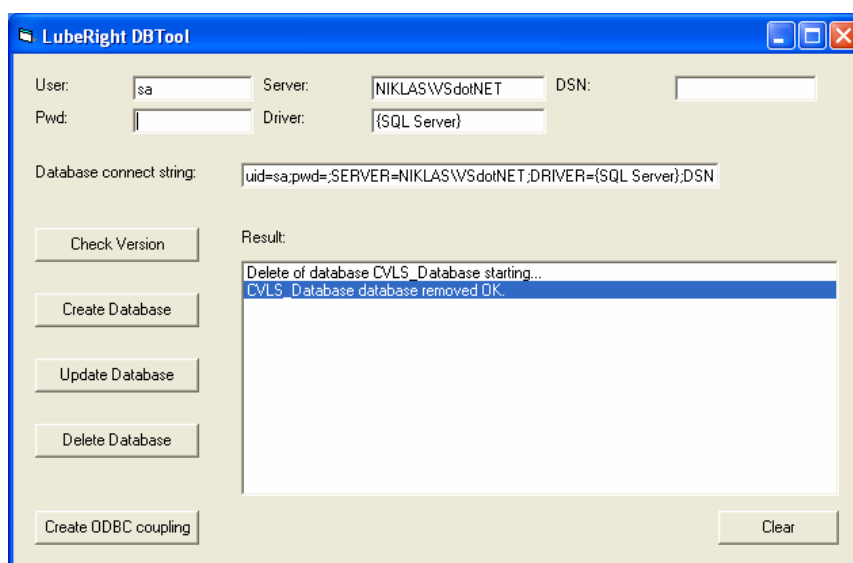


# How to clean up the database

# How to backup the database



## Computerised Lubrication System



## Contents

1	CLEANING UP THE DATABASE .....	4
1.1	Close down the LubeRight program. ....	4
1.2	Determine the servers name .....	4
1.3	Start the program LubeRight DB Tool.....	5
1.4	Delete the database.....	6
1.5	Create a new database.....	7
2	BACKING UP THE DATABASE .....	8
2.1	Close down the LubeRight program. ....	8
2.2	Stop the database.....	8
2.3	Copy the database files .....	9
2.4	Start the database .....	10

# 1 CLEANING UP THE DATABASE

## 1.1 Close down the LubeRight program.

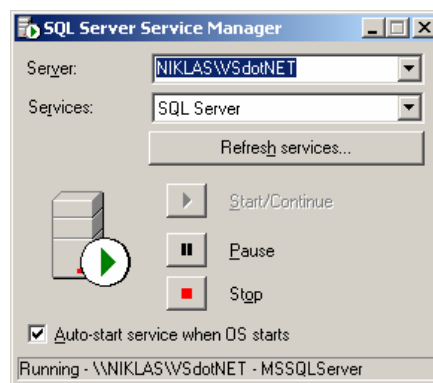
## 1.2 Determine the servers name

Double-click the icon with a green arrow in the bar beside the clock.



*Figure 1, Database icon*

The text highlighted blue in the Server field is the database server name. Make a note of the text or copy it. You will need it later.



*Figure 2, SQL Server*

Close the window by clicking the cross in the upper right corner.

### 1.3 Start the program LubeRight DB Tool

Start the program LubeRightDBTool.exe in the folder C:\Program\LubeRightDBTool, it might also be placed in the folder C:\Program Files\LubeRightDBTool

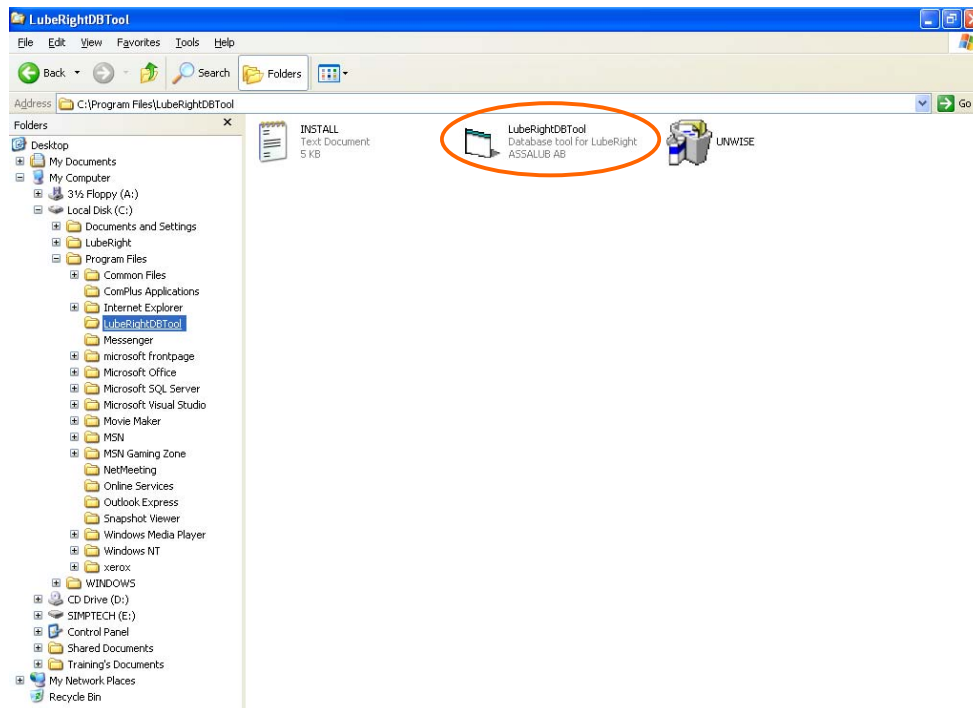
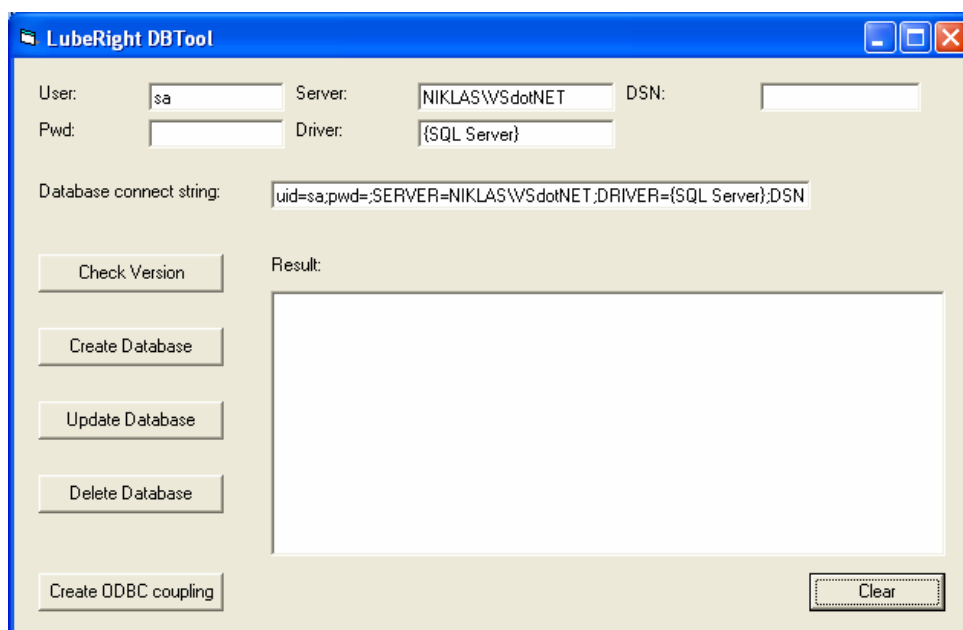


Figure 3, LubeRightDBTool.EXE

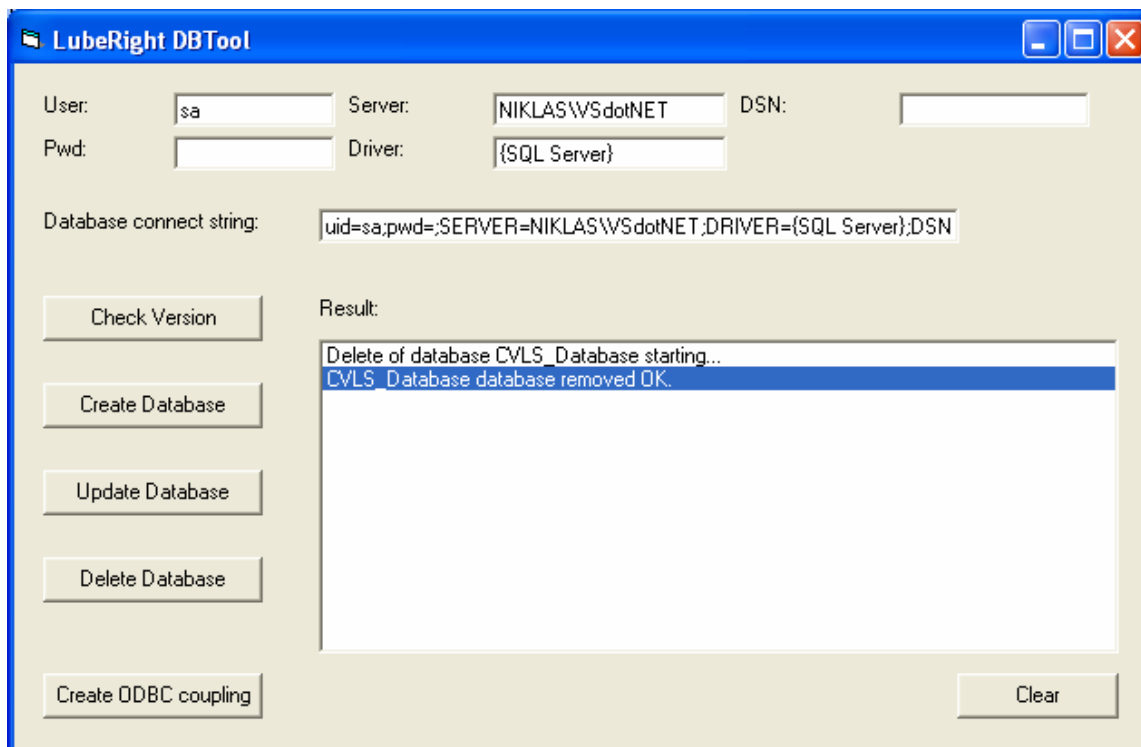
The database server name that was noted or copied earlier must be entered in the Server: field.



*Figure 4, LubeRightDBTool*

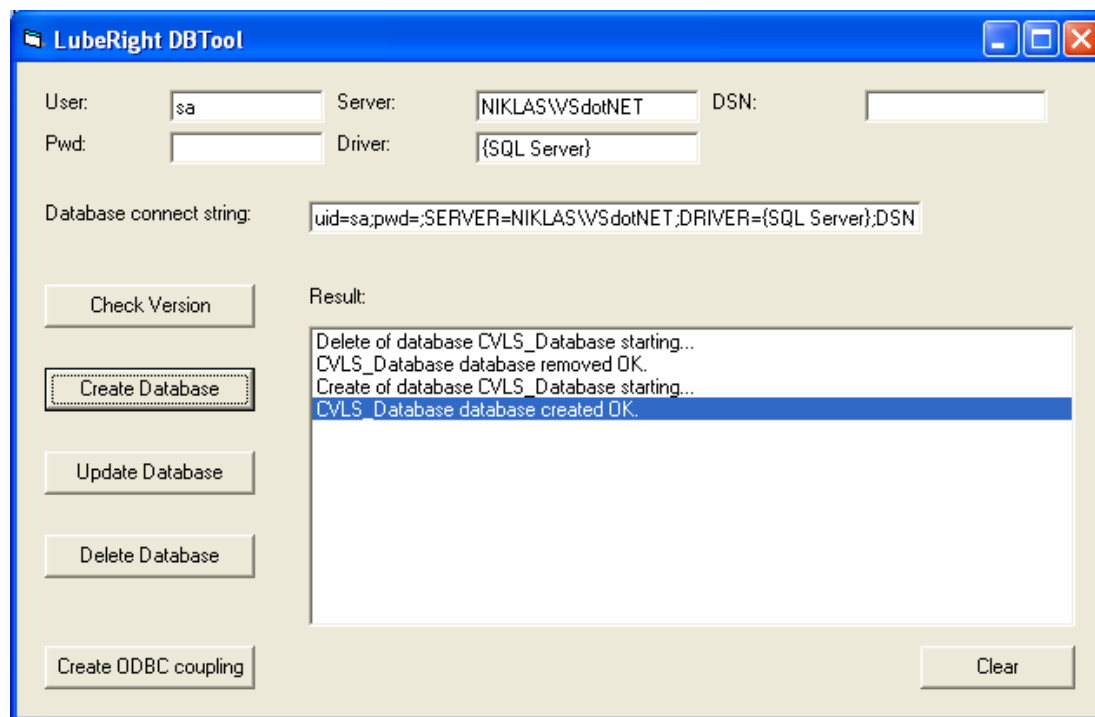
## 1.4 Delete the database

Click the Delete Database button.

*Figure 5, Delete database*

## 1.5 Create a new database

Click the Create Database button.



*Figure 6, Create database*

Close the window by clicking the cross in the upper right corner.

Now, the LubeRight program can be started again with an empty database.

## 2 BACKING UP THE DATABASE

2.1 Close down the LubeRight program.

2.2 Stop the database

Double-click the icon with a green arrow in the bar beside the clock.



Figure 7, Database icon

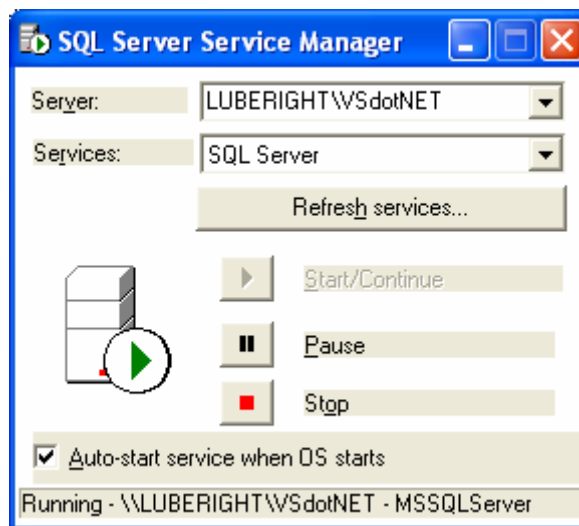


Figure 8, SQL Server Service Manager

Click the button with the red square, Stop.

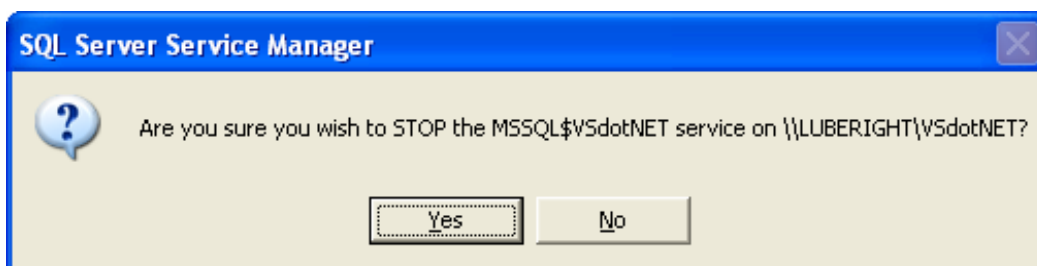


Figure 9, SQL Server Service Manager

Click Yes.

Wait until the database has stopped and the green arrow has been replaced by a red square, see below.

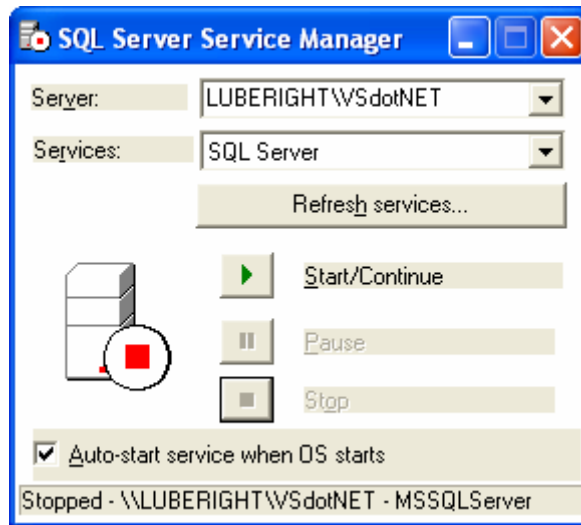


Figure 10, SQL Server Service Manager

Close the window by clicking the cross in the upper right corner.

### 2.3 Copy the database files

The files that shall be copied are:  
CVLS\_Database.mdf  
CVLS\_Database\_log.LDF

The files are placed in the folder:  
C:\Program(or Program Files)\Microsoft SQL Server\MSSQL\$VSDotNET\Data

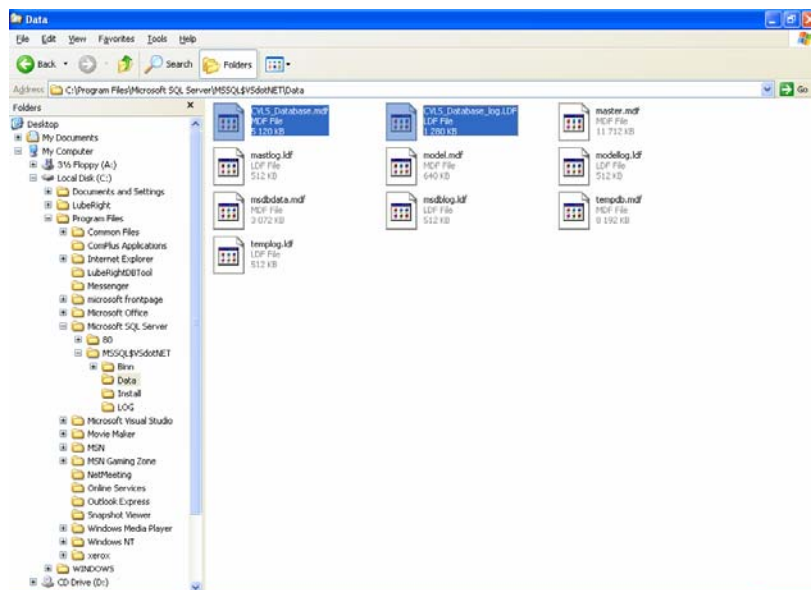


Figure 11, Database files

## 2.4 Start the database

Double-click the icon with a red square in the bar besides the clock.

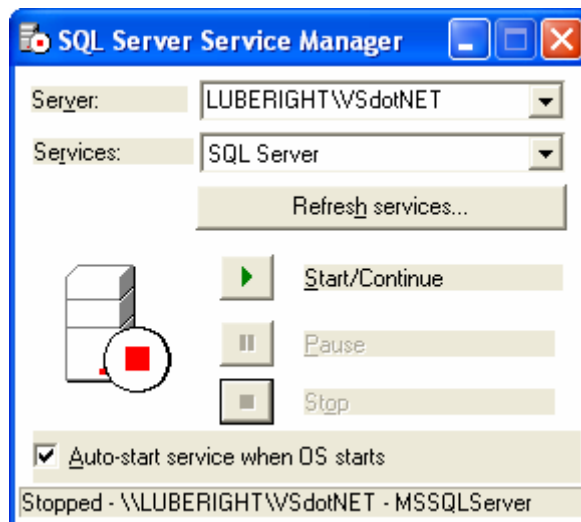


Figure 12, SQL Server Service Manager

Click the button with the green arrow, Start/Continue.

Wait until the database has started and the red square has been replaced by a green arrow, se below.

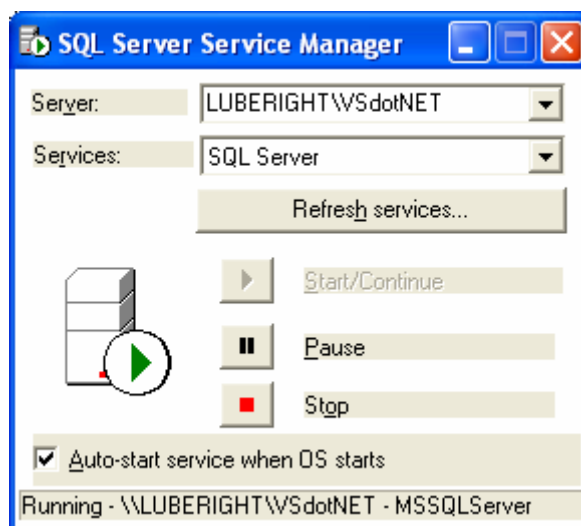


Figure 13, SQL Server Service Manager

You can now start the LubeRight program again.



**ASSALUB AB**

P.O. Box 240  
SE-597 26 Åtvidaberg  
SWEDEN

Phone.       +46 120 358 40  
Fax.           +46 120 152 11  
e-post        [info@assalub.se](mailto:info@assalub.se)  
Internet:     [www.assalub.se](http://www.assalub.se)